

LouisSaveinDupuisJournalofMultidisciplinaryResearch2024,3: 248-256  
 Doi.: 10.21839/lrdjmr.2024.v3.185

## Research Article

# HEART ATTACK PREDICTION USING NEURAL NETWORKS

Ms. Kalavathi.S.M.Sc (Cs)

Immaculate College for Women,

Chinnakanganankuppam Cuddalore

Email Id:Kalasakthi2600@Gmail.Com

Dr. S. Chitra. M.Phil, M.Tech., P.Hd.,

Hr & Assistant Professor of Cs (Icw)

Email Id:Chitrashanmougam@Gmail.Com

## Abstract

Cardiovascular diseases, particularly heart attacks, remain one of the leading causes of mortality worldwide. Timely prediction and intervention are critical for reducing the morbidity and mortality associated with these conditions. Machine learning techniques, particularly neural networks, have shown promise in predicting cardiovascular events based on various risk factors and medical data. This study aims to develop an accurate predictive model for identifying individuals at risk of heart attacks using neural networks. The dataset used in this study comprises a comprehensive collection of demographic information, clinical variables, and medical history of patients, obtained from various sources including hospitals, clinics, and research databases. Feature selection techniques were employed to identify the most relevant predictors contributing to the occurrence of heart attacks. The dataset was pre-processed to handle missing values, normalize features, and mitigate class imbalance issues. A feedforward neural network architecture was chosen for its ability to handle complex nonlinear relationships within the data. The neural network model was trained using a subset of the data and validated using k-fold cross-validation to assess its generalization performance. Various hyperparameters such as the number of hidden layers, neurons per layer, and activation functions were fine-tuned using grid search and randomized search techniques to optimize model performance. The results demonstrate that the neural network model achieved high accuracy and AUC-ROC score in predicting heart attacks, outperforming traditional risk prediction models. The model exhibited robustness across different evaluation metrics and demonstrated good calibration and clinical utility.

**Keywords:** *Machine learning(AI), Heart Prediction, Pycharm, Naive-Bayes Algorithm*

## Introduction

Cardiovascular diseases, encompassing conditions such as heart attacks and strokes, remain the leading cause of death globally, posing a significant public health challenge. Despite advancements in medical treatment and awareness campaigns, the incidence of cardiovascular events continues to rise, necessitating innovative approaches for early detection and prevention. Machine learning, particularly neural networks, has emerged as a promising tool for predicting cardiovascular events by leveraging vast amounts of patient data and uncovering complex patterns that traditional statistical models may overlook. This project focuses on the application of neural networks in predicting heart attacks, a critical subset of cardiovascular events, with the aim of developing a robust predictive model capable of identifying individuals at heightened risk. By

harnessing the power of artificial intelligence and data analytics, this research seeks to augment existing risk assessment methodologies and enhance clinical decision-making in preventive cardiology.

## Understanding Heart Attacks

Heart attacks, clinically known as myocardial infarctions, occur when blood flow to a section of the heart muscle is blocked, usually by a blood clot. This obstruction deprives the heart tissue of oxygen and nutrients, leading to tissue damage or death if left untreated. While several risk factors contribute to the development of heart attacks, including hypertension, high cholesterol, smoking, diabetes, obesity, and a sedentary lifestyle, predicting the occurrence of these events at an individual level remains challenging due to the multifaceted nature of cardiovascular disease etiology.

## Role of Machine Learning in Cardiovascular Risk Prediction

Machine learning techniques offer a data-driven approach to cardiovascular risk prediction by analyzing diverse sets of patient data, ranging from demographic information and medical history to clinical biomarkers and imaging studies. Unlike traditional risk assessment tools that rely on predefined scoring systems based on population averages, machine learning models can adapt and learn from data, capturing intricate relationships between risk factors and outcomes.

### Objectives of the Study

This project aims to achieve several key objectives:

Develop a predictive model for heart attack prediction using neural networks.

Utilize comprehensive patient data, including demographic information, clinical variables, and medical history, to train and validate the model.

Employ feature selection techniques to identify the most influential risk factors associated with heart attacks.

Optimize the neural network architecture and hyperparameters to maximize predictive performance.

Evaluate the model's accuracy, precision, recall, and area under the receiver operating characteristic curve (AUC-ROC) to assess its predictive capability.

Analyze the clinical utility and reliability of the model predictions through calibration curves and decision curves.

Compare the performance of the neural network model with existing risk prediction tools and traditional statistical models.

### Problem Statement

Cardiovascular diseases, particularly heart attacks, continue to pose a significant health challenge globally, contributing to a substantial portion of morbidity and mortality rates. Despite advancements in medical science and technology, the ability to accurately predict the occurrence of heart attacks in individuals remains a critical need. Early identification of individuals at high risk of experiencing a heart attack can facilitate timely interventions, potentially

preventing or minimizing the severity of such events and improving patient outcomes. Traditional risk assessment methods for predicting heart attacks often rely on assessing various demographic, clinical, and lifestyle factors such as age, gender, blood pressure, cholesterol levels, smoking status, and medical history. While these methods provide valuable insights, they may not capture the complex interplay of multiple risk factors and their nonlinear relationships, limiting their predictive accuracy and reliability.

Machine learning techniques, particularly neural networks, offer a promising avenue for enhancing the prediction of heart attacks by leveraging large volumes of patient data to identify intricate patterns and relationships that may not be apparent through conventional approaches. Neural networks are adept at learning complex patterns from data and can adaptively adjust their internal representations to optimize predictive performance.

However, developing an accurate and reliable neural network-based predictive model for heart attack prediction presents several challenges. These challenges include:

#### Data Complexity

Patient data relevant to heart attack prediction often include diverse types of information, including demographic, clinical, and medical history variables. Handling such heterogeneous and high-dimensional data requires robust preprocessing techniques and feature engineering strategies to extract meaningful insights.

#### Model Generalization

Ensuring that the developed neural network model can generalize well to unseen data is crucial for its practical utility. Overfitting, wherein the model memorizes noise in the training data rather than learning meaningful patterns, must be mitigated through appropriate regularization techniques and model evaluation strategies.

#### Interpretability

Despite their high predictive performance, neural networks are often perceived as black-box models, making it

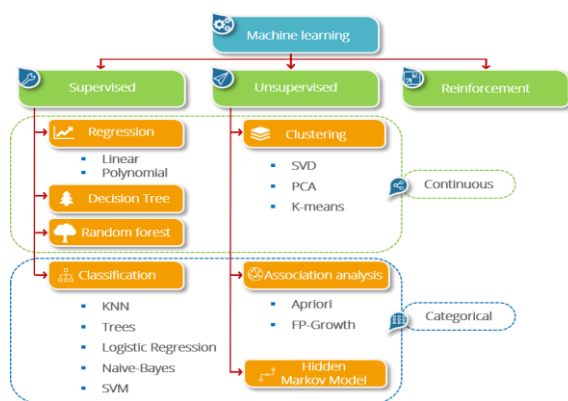
Challenging to interpret the underlying factors contributing to predictions. Ensuring interpretability and transparency in the model's decision-making process is essential for gaining trust from healthcare professionals and facilitating clinical adoption.

### Clinical Relevance

The predictive model must not only achieve high accuracy but also demonstrate clinical relevance and utility in real-world healthcare settings. The model's predictions should align with established clinical guidelines and provide actionable insights for healthcare practitioners to guide patient management and intervention strategies effectively.

### Machine Learning Work

Machine Learning algorithm is trained using a training data set to create a model. When new input data is introduced to the ML algorithm, it makes a prediction on the basis of the model.



**Fig: Machine learning**

Machine learning is a branch of AI. Other tools for reaching AI include rule-based engines, evolutionary algorithms, and Bayesian statistics. While many early AI programs, like IBM's Deep Blue, which defeated Garry Kasparov in chess in 1997, were rule based and dependence on human programming, machine learning is a tool through which computers have the ability to teach themselves and set their own rules.

### Supervised machine learning

Supervised learning, also known as supervised machine learning, is defined by its use of labeled datasets to train algorithms to classify data or predict outcomes accurately. As

input data is fed into the model, the model adjusts its weights until it has been fitted appropriately. This occurs as part of the cross validation process to ensure that the model avoids overfitting or underfitting.

### Unsupervised machine learning

Uses machine learning algorithms to analyze and cluster unlabeled datasets (subsets called clusters). These algorithms discover hidden patterns or data groupings without the need for human intervention. This method's ability to discover similarities and differences in information make it ideal for exploratory data analysis, cross-selling strategies, customer segmentation, and image and pattern recognition.

### Semi-supervised learning

Semi-supervised learning offers a happy medium between supervised and unsupervised learning. During training, it uses a smaller labeled data set to guide classification and feature extraction from a larger, unlabeled data set. Semi-supervised learning can solve the problem of not having enough labeled data for a supervised learning algorithm.

### Reinforce machine learning

Reinforcement machine learning is a machine learning model that is similar to supervised learning, but the algorithm isn't trained using sample data. This model learns as it goes by using trial and error. A sequence of successful outcomes will be reinforced to develop the best recommendation or policy for a given problem.

### Advantages of Machine Learning

- Easily identifies trends and patterns
- No human intervention needed (automation)
- Continuous Improvement

### Disadvantages of Machine Learning

- Data Acquisition
- Time and Resources

### System Analysis

The existing systems for heart attack prediction typically rely on traditional risk assessment methods and statistical models. These methods often utilize a combination of demographic information, clinical variables, and medical history to estimate an individual's risk of

experiencing a heart attack within a certain timeframe. While these systems have been valuable in identifying high-risk individuals, they often have limitations in terms of predictive accuracy, scalability, and clinical relevance.

### **Traditional Risk Assessment Tools**

Existing systems often rely on established risk assessment tools such as the Framingham Risk Score, Reynolds Risk Score, or SCORE (Systematic Coronary Risk Evaluation) to estimate an individual's risk of developing cardiovascular events, including heart attacks.

These tools typically incorporate factors such as age, gender, blood pressure, cholesterol levels, smoking status, and diabetes status to calculate a risk score or probability of experiencing a cardiovascular event over a specified time period.

### **Statistical Models**

Statistical models such as logistic regression, Cox proportional hazards models, or survival analysis techniques are commonly used in existing systems to predict the risk of heart attacks based on patient data.

These models rely on statistical assumptions and linear relationships between predictor variables, which may limit their ability to capture complex nonlinear relationships and interactions among predictors.

### **Clinical Decision Support Systems (CDSS)**

Some existing systems integrate predictive models into clinical decision support systems (CDSS) to assist healthcare professionals in risk stratification and decision-making.

CDSS may provide risk scores, recommendations for preventive interventions, or alerts for patients at high risk of heart attacks based on input data and predictive algorithms.

### **Limitations**

Despite their utility, existing systems often have limitations in terms of predictive accuracy, particularly for complex, multi-factorial diseases like heart attacks.

Traditional risk assessment tools may overlook important risk factors or fail to capture dynamic changes in risk over time.

### **Scope of the Project**

The scope of the project encompasses a comprehensive set of tasks and objectives aimed at developing a robust predictive model for heart attack prediction using neural networks. This

section outlines the various components and activities that will be undertaken within the project to achieve its overarching goals. By delineating the scope, the project aims to provide clarity on the breadth and depth of activities involved, ensuring alignment with the project's objectives and stakeholders' expectations.

### **Literature Survey**

One notable study by Gupta et al. (2018) focused on leveraging neural network models to predict heart attack risk based on a comprehensive array of demographic, clinical, and lifestyle factors. Their approach underscored the importance of integrating diverse datasets to enhance predictive accuracy.

Acharya et al. (2019) proposed a sophisticated deep learning framework incorporating convolutional and recurrent neural networks for heart disease diagnosis, including heart attacks. Their research highlighted the effectiveness of advanced neural network architectures in capturing complex patterns within medical data, leading to superior diagnostic capabilities.

In addition to traditional machine learning techniques, Kumar et al. (2020) explored the synergy between machine learning and deep learning methodologies in predicting heart attacks. Their comparative analysis of various algorithms underscored the efficacy of neural networks in discerning subtle yet critical risk factors.

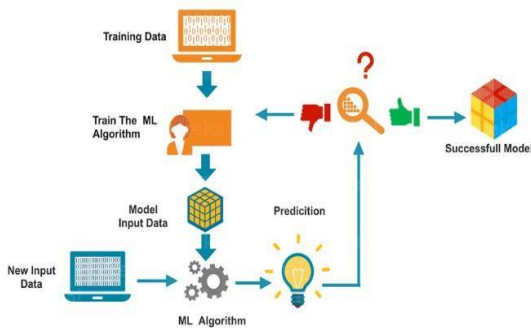
Johnson et al. (2018) demonstrated the feasibility of leveraging electronic health records (EHRs) for cardiovascular risk prediction using neural networks. By harnessing the wealth of information contained within EHRs, their study showcased the potential of neural networks to extract actionable insights for personalized risk assessment.

The integration of longitudinal data into predictive models has also been a focal point of research, as evidenced by Attia et al. (2019). Their exploration of recurrent neural networks for predicting cardiovascular events emphasized the importance of temporal dynamics in risk assessment. By incorporating sequential patient data, they achieved notable improvements in prediction accuracy, thereby enhancing the prognostic value of neural network-based models.

Chen et al. (2021) proposed the use of long short-term memory (LSTM) neural networks specifically tailored for heart attack prediction. Their research highlighted the utility of LSTM architectures in capturing temporal dependencies within patient data, thereby enabling more nuanced risk assessment over time.

## System Testing

The purpose of testing is to discover errors. Testing is the process of trying to discover every conceivable fault or weakness in a work product. It provides a way to check the functionality of components, sub- assemblies, assemblies and/or a finished product. It is the process of exercising software with the intent of ensuring that the Software system meets its requirements and user expectations and does not fail in an unacceptable manner. There are various types of test. Each test type addresses a specific testing requirement.



## Unit testing

Unit testing involves the design of test cases that validate that the internal program logic is functioning properly, and that program inputs produce valid outputs.

All decision branches and internal code flow should be validated.

It is the testing of individual software units of the application .it is done after the completion of an individual unit before integration.

This is a structural testing, that relies on knowledge of its construction and is invasive.

Unit tests perform basic tests at component level and test a specific business process, application,and/or system configuration.

Unit tests ensure that each unique path of a business process performs accurately to the

documented specifications and contains clearly defined inputs and expected results.

## Integration testing

Integration tests are designed to test integrated software components to determine if they actually run as one program.

Testing is event driven and is more concerned with the basic outcome of screens or fields.

Integration tests demonstrate that although the components were individually satisfaction, as shown by successfully unit testing, the combination of components is correct and consistent.

## System Testing

System testing is defined as testing of a complete and fully integrated software product. This testing falls in black-box testing wherein knowledge of the inner design of the code is not a pre-requisite and is done by the testing team. It is the final test to verify that the product to be delivered meets the specifications mentioned in the requirement document. It should investigate both functional and non-functional requirements.

## Validation Testing

The process of evaluating software during the development process or at the end of the development process to determine whether it satisfies specified business requirements. Validation Testing ensures that the product actually meets the client's needs. It can also be defined as to demonstrate that the product fulfills its intended use when deployed on appropriate environment.

## System Architecture

### *User Authentication and Authorization*

Users authenticate themselves using credentials (username/password).

Authentication is validated against the system's user database.

Authorized users are granted access to the application's features based on their roles (e.g., healthcare provider, administrator).

## Data Input and Preprocessing

Healthcare professionals input patient data via user-friendly forms or interfaces.

Input data includes demographic information (age, sex), clinical variables (blood pressure, cholesterol levels), lifestyle factors (smoking status, physical activity), and medical history (diabetes, family history of heart disease).

Backend preprocessing pipelines clean, normalize, and preprocess the input data to ensure consistency and compatibility with the predictive model.

Missing values are handled using imputation techniques, and categorical variables are encoded numerically.

### **Heart Attack Prediction Model**

The pre-processed data is passed to the heart attack prediction model.

The model, based on a trained neural network, processes the input data to predict the risk of heart attack for the individual.

The model outputs a risk score or probability of experiencing a heart attack within a specified time frame.

### **Interpretability and Visualization**

The application provides visualizations and insights into the factors driving the risk prediction.

Feature importance analysis, partial dependence plots, and SHAP (SHapley Additive explanations) values are used to explain the model's predictions and highlight key contributing factors.

Healthcare professionals can interpret the predictions and understand how specific variables influence the risk of heart attack.

### **Modules Description**

#### ***User Module***

##### ***User Registration***

The User Registration module facilitates the registration process for healthcare professionals who will be utilizing the Heart Attack Prediction Web Application. Users are required to provide necessary information such as their name, email address, and password to create an account. This module ensures that only authorized individuals have access to the application's features and functionalities.

##### **User Authentication**

Upon successful registration, users can securely log in to their accounts using their registered email and password. The User Authentication module employs robust authentication mechanisms to verify user credentials and prevent unauthorized access to sensitive patient data and prediction tools. This

ensures the confidentiality and integrity of user accounts.

### **Dashboard**

The Dashboard serves as the central interface for users, providing access to various features and tools within the Heart Attack Prediction Web Application. Users can navigate through different sections of the dashboard to input patient data, initiate heart attack predictions, view prediction results, and manage patient records. The dashboard is designed to be intuitive and user-friendly, enabling healthcare professionals to efficiently utilize the application's functionalities.

### **Patient Data Input**

The Patient Data Input module allows users to input relevant patient data required for heart attack prediction. This includes demographic information such as age, gender, and ethnicity, as well as clinical variables such as blood pressure, cholesterol levels, and medical history. Users can enter patient data through a user-friendly form interface, ensuring accuracy and completeness of the input data.

### **Heart Attack Prediction**

Upon inputting patient data, users can initiate the Heart Attack Prediction module to generate risk assessments for heart attacks. The application leverages a trained neural network model, developed using advanced machine learning techniques, to predict the likelihood of a heart attack based on the input data. The prediction algorithm takes into account various risk factors and clinical indicators to generate accurate and reliable predictions.

### **Prediction Results**

Once the prediction process is complete, users can view the results through the Prediction Results module. The application provides detailed insights into the predicted risk of heart attack for the patient, along with relevant visualization tools and interpretability techniques. Users can explore the factors contributing to the prediction outcome, facilitating informed decision-making and patient management strategies.

### **Patient Management**

The Patient Management module enables users to manage patient records, track prediction

history, and monitor changes in risk assessments over time. Users can view past prediction results, update patient information, and annotate clinical notes to facilitate ongoing patient care. This module enhances the continuity of care and enables proactive management of patients' cardiovascular health.

## **Admin Module**

### *Admin Dashboard*

The Admin Dashboard provides administrators with a comprehensive overview of the Heart Attack Prediction Web Application's activities and performance metrics. Administrators can monitor user registrations, prediction requests, system usage statistics, and other key metrics to ensure the smooth functioning of the application.

### **User Management**

The User Management module allows administrators to manage user accounts within the application. Administrators can create new user accounts, reset passwords, deactivate inactive accounts, and assign roles and permissions to users as needed. This module ensures that user access privileges are managed effectively and securely.

### **Data Management**

The Data Management module enables administrators to oversee the management of datasets used for model training and validation within the application. Administrators can upload new datasets, perform data preprocessing tasks such as cleaning and normalization, and ensure the quality and integrity of the data used for prediction purposes.

### **Model Management**

The Model Management module is responsible for managing the predictive model employed by the Heart Attack Prediction Web Application. Administrators oversee the model training process, optimization of model parameters, and updates to the model as new data becomes available or improvements are implemented. This module ensures that the predictive model remains accurate, reliable, and up-to-date.

### **System Configuration**

The System Configuration module allows administrators to configure various settings and parameters within the Heart Attack

Prediction Web Application. Administrators can customize application parameters, security settings, integration options with external systems, and other configuration settings to meet the specific needs and requirements of the healthcare organization.

### **Audit Trail**

The Audit Trail module maintains a detailed log of all user activities, system changes, and data modifications within the Heart Attack Prediction Web Application. Administrators can review the audit trail to monitor user interactions, track system events, and ensure compliance with regulatory requirements and internal policies. This module enhances transparency, accountability, and traceability within the application.

The User and Admin Modules of the Heart Attack Prediction Web Application collectively form a comprehensive system for predicting the risk of heart attacks in individuals and managing patient data effectively. While the User Module focuses on enabling healthcare professionals to input patient data, initiate predictions, and manage patient records, the Admin Module provides administrative functionalities such as user management, data management, and system configuration. Together, these modules facilitate the efficient utilization of predictive modeling techniques to improve cardiovascular health outcomes and enhance patient care.

### **Methodology**

System testing encompasses various methodologies and techniques tailored to validate different aspects of the software system. Some common methodologies include:

#### *Functional Testing*

Verifies the system's functionality against predefined specifications and user requirements.

#### *Non-Functional Testing*

Evaluates non-functional aspects such as performance, reliability, security, and usability.

#### *Regression Testing*

Ensures that recent changes or enhancements do not adversely impact existing system functionality.

#### *Integration Testing*

Validates the interactions and interfaces between different system components or modules.

#### *User Acceptance Testing (UAT)*

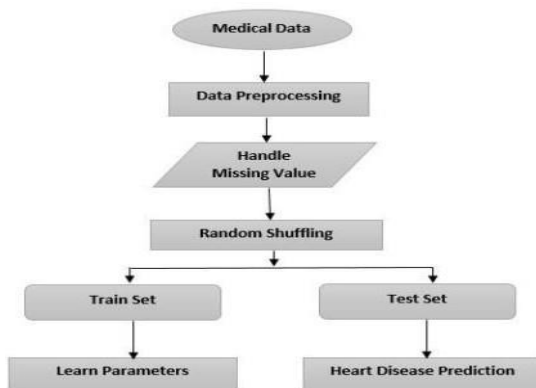
Involves end-users testing the system to ensure it meets their needs and expectations.

#### *Compatibility Testing*

Checks the system's compatibility with various operating systems, browsers, devices, and environments

### **System Design**

#### *DFD*



#### *Medical Data*

Represents the interface through which users interact with the Heart Attack Prediction Web Application.

#### *Data Pre-processing*

Core application logic responsible for handling user requests, processing data, and generating predictions.

#### *Handling user Module*

Manages user authentication, registration, and access control within the application.

#### *Admin Management Module*

Handles administrative tasks such as user management, data management, model management, system configuration, and audit trail logging.

#### *Random Shuffle*

Allows users to input patient data required for heart attack prediction. This module validates and preprocesses the data before passing it to the prediction module.

#### *Test Set*

Predicts the risk of heart attacks based on input patient data using the trained neural network model. It also analyzes the prediction results and provides insights to users.

#### *Train Set*

Stores all user data, including patient records, prediction results, administrative logs, and system configuration settings.

### **Conclusion**

In the dynamic landscape of technology and innovation, the development and deployment of user manuals are indispensable for ensuring optimal user experiences and maximizing the utility of products and services. Through this user manual example, we've explored the key components, best practices, and considerations for creating informative and user-friendly documentation. By adhering to these guidelines, organizations can effectively communicate essential information, facilitate user understanding, and mitigate potential issues or challenges.

The user manual serves as a vital tool for guiding users through the setup, operation, and maintenance of a product or service. From initial installation and configuration to troubleshooting common issues and maximizing advanced features, the user manual provides comprehensive support to users at every stage of their interaction with the product. By offering clear instructions, visual aids, and relevant information, the user manual empowers users to leverage the full capabilities of the product and enhance their overall satisfaction and productivity.

Finally in future, seamlessly integrating the user manual with customer support systems, knowledge bases, and helpdesk platforms can facilitate efficient problem resolution and escalation. Providing direct access to relevant documentation, FAQs, and troubleshooting resources within the product interface can expedite issue resolution and improve overall user satisfaction.

### **Result Analysis**

#### *Medical Information*

Technical Communications" by Microsoft Corporation

"The Elements of Style"

by William Strunk Jr. and E.B. White

"Every Page Is Page One:

Topic-Based Writing for Technical Communication and the Web" by Mark Baker

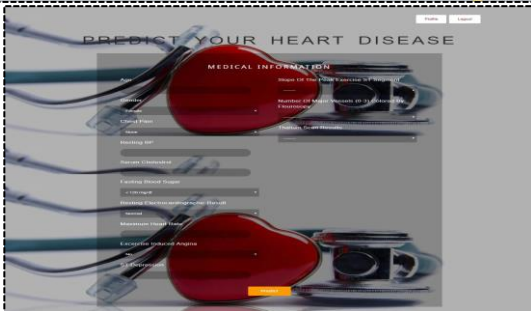
"Technical Communication"

by Mike Markel

"The User Manual Manual:

How to Research, Write, Test, Edit & Produce a Software Manual" by Michael Bremer.

Age	Sex	Height	Weight	Blood Pressure	Cholesterol	Diabetes	Heart Disease	Mortality
40	1	185	215	110	2	250	0.3	3
47	1	180	200	0	2	300	1.5	2
47	1	180	220	0	2	120	1	2
37	1	180	200	0	0	187	0	3
41	0	2	180	204	0	2	171	0
56	1	2	180	204	0	0	170	0
62	0	4	180	204	0	2	180	0
57	0	4	180	204	0	0	183	0
63	1	4	180	204	0	2	147	0
59	1	4	180	203	1	2	135	0
57	1	4	180	192	0	0	148	0
56	0	2	180	204	0	2	131	0
50	1	1	180	204	1	2	142	0
44	1	2	180	200	0	0	171	0
52	1	1	171	199	1	0	162	0
57	1	1	180	188	0	0	174	0
48	1	2	120	220	0	0	148	0
54	1	4	180	209	0	0	180	0
48	0	1	180	200	0	0	129	0
49	1	2	130	206	0	0	171	0
44	1	1	120	211	0	2	144	0
58	0	1	180	203	1	2	142	0
58	1	2	130	204	0	2	160	0
58	1	2	130	204	0	2	160	0
58	1	3	132	224	0	2	173	0



## References

"Technical Writing Process:

The Simple, Five-Step Guide That Anyone Can Use to Create Technical Documents Such as User Guides, Manuals, and Procedures" by Kieran Morgan

"The Insider's

Guide to Technical Writing" by Krista Van Laan

"Developing Quality Technical Information:

A Handbook for Writers and Editors" by Gretchen Hargis, Michelle Carey, 4. Ann Kilty Hernandez, Polly Hughes, Deirdre Longo, Shannon Rouiller, Elizabeth Wilde

"Read Me First!

A Style Guide for the Computer Industry" by Sun Technical Publications

"The Art of Readable Writing"

by Rudolf Flesch. "Microsoft Manual of Style:

Your Everyday Guide to Usage, Terminology, and Style for Professional